

BL Neonview

BL LIGHTING
SINCE 1986

Technical drawing of a mechanical assembly, likely a bracket or support structure, showing dimensions in millimeters (mm) and inches (").

Dimensions:

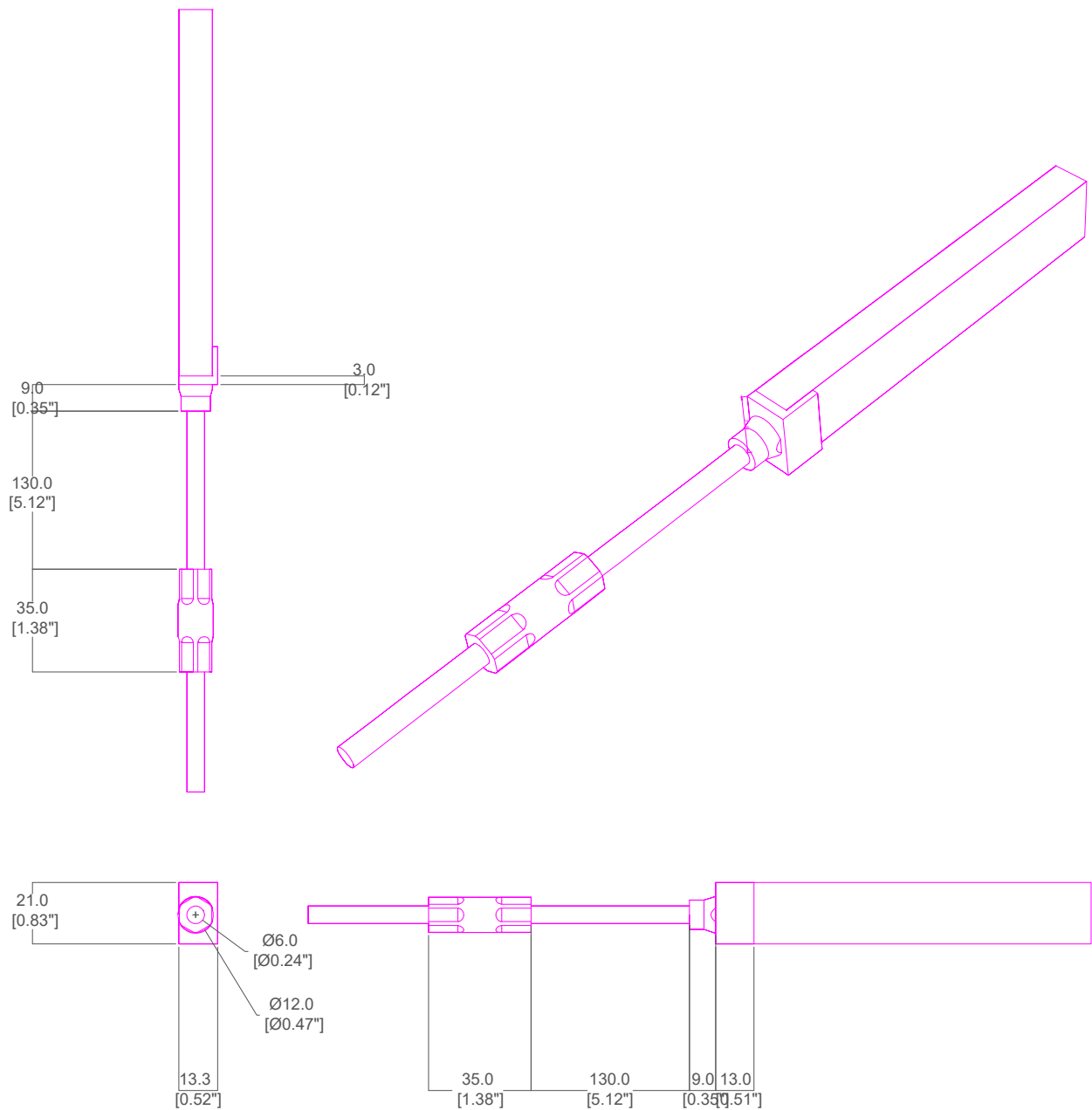
- Top horizontal dimension: 11.5 mm [0.45"]
- Right vertical dimension: 3.0 mm [0.12"]
- Bottom horizontal dimension: 22.7 mm [0.89"]
- Bottom vertical dimension: 22.6 mm [0.89"]
- Bottom horizontal dimension (left): 6.0 mm [0.24"]
- Bottom horizontal dimension (right): 21.0 mm [0.83"]
- Bottom horizontal dimension (total): 12.0 mm [0.47"]

The drawing includes a perspective view of the assembly and a cross-sectional view showing internal features like a hole and a slot.



01

End Lead



CAD Drawing subject to change without notice.



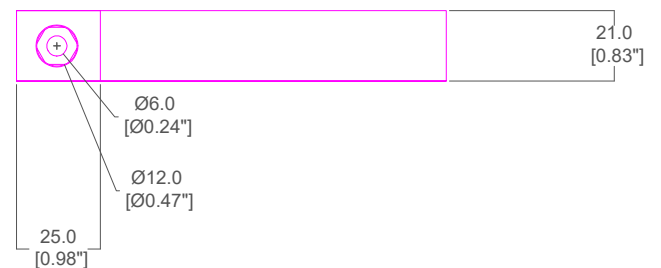
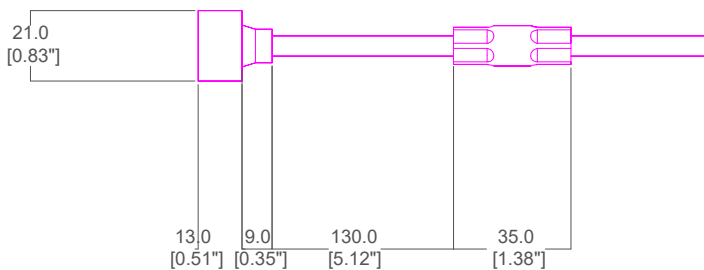
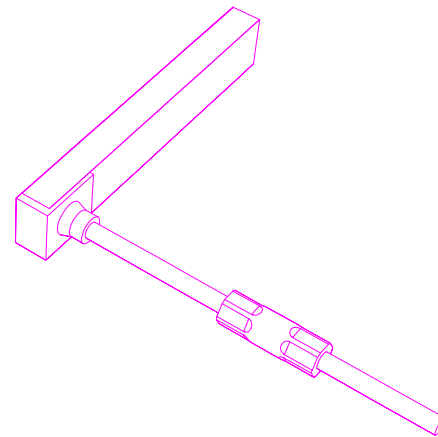
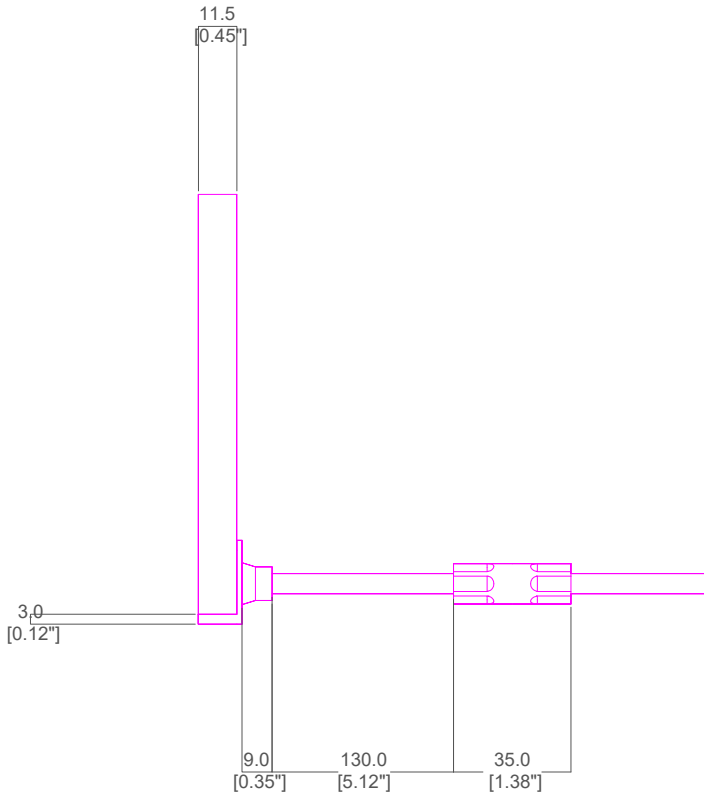
Flat Select Pixel ID

BL Neonview

Diffused, Flexible, Linear LED Lighting,
24VDC, Constant Voltage,
Flat Profile, Silicone, Color Changing



Right Side Lead



0 80mm

CAD Drawing subject to change without notice.

BL LIGHTING
ILLUMINATE EVERYTHING

111 - 8838 Heather St. Vancouver, BC, Canada. V6P 3S8
P: 1-604-874-4405 E: info@bllighting.com

Copyright © BL INNOVATIVE LIGHTING. All Rights Reserved.

For more information,
please download the
BL LIGHTING catalog

bllighting.com



Flat Select Pixel ID

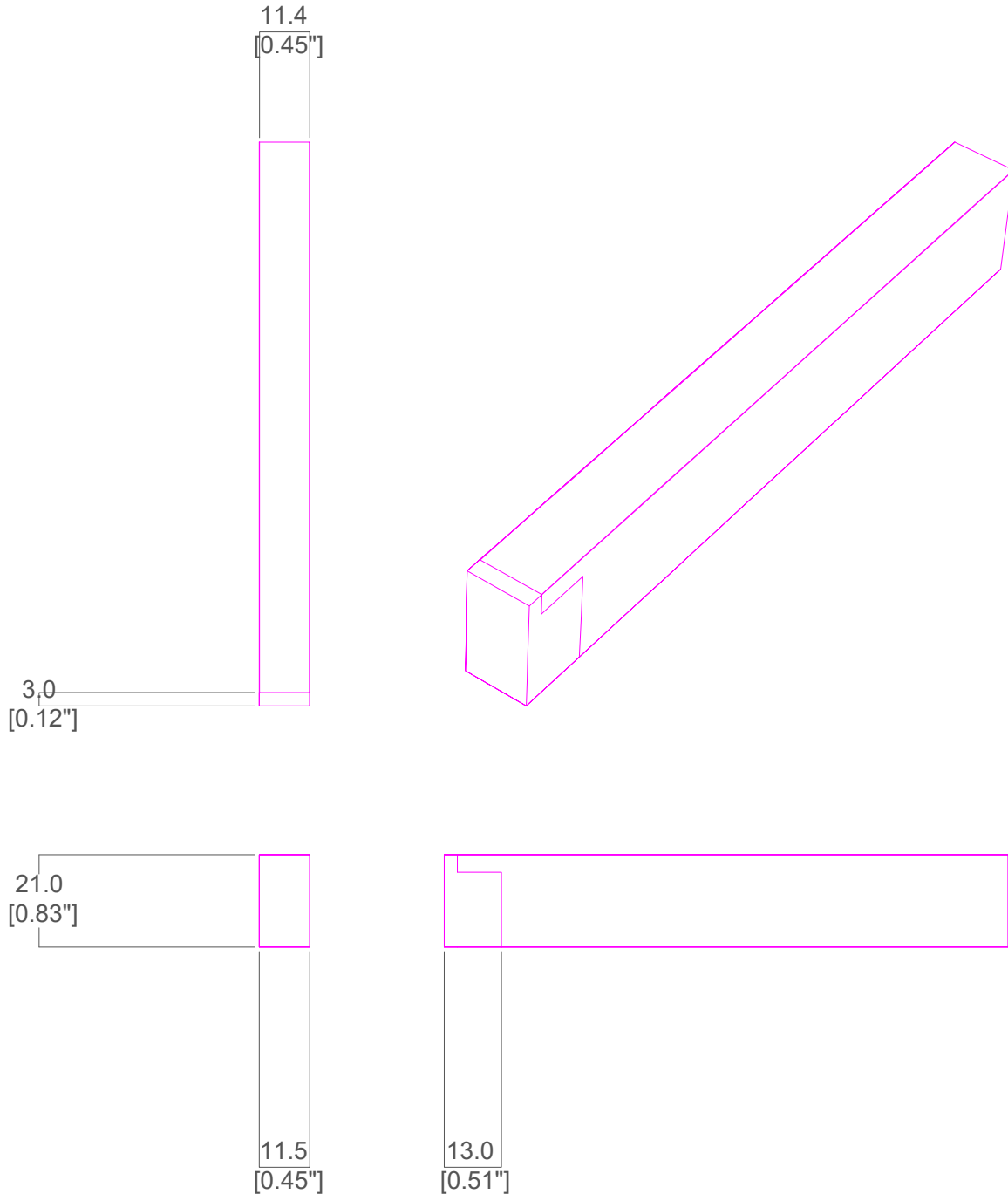
BL Neonview

Diffused, Flexible, Linear LED Lighting,
24VDC, Constant Voltage,
Flat Profile, Silicone, Color Changing



LIGHTING
SINCE 1986

End Cap



CAD Drawing subject to change without notice.

BL LIGHTING

ILLUMINATE EVERYTHING

111 - 8838 Heather St. Vancouver, BC, Canada. V6P 3S8

P: 1-604-874-4405 E: info@bllighting.com

Copyright © BL INNOVATIVE LIGHTING. All Rights Reserved.

For more information,
please download the
BL LIGHTING catalog

bllighting.com

